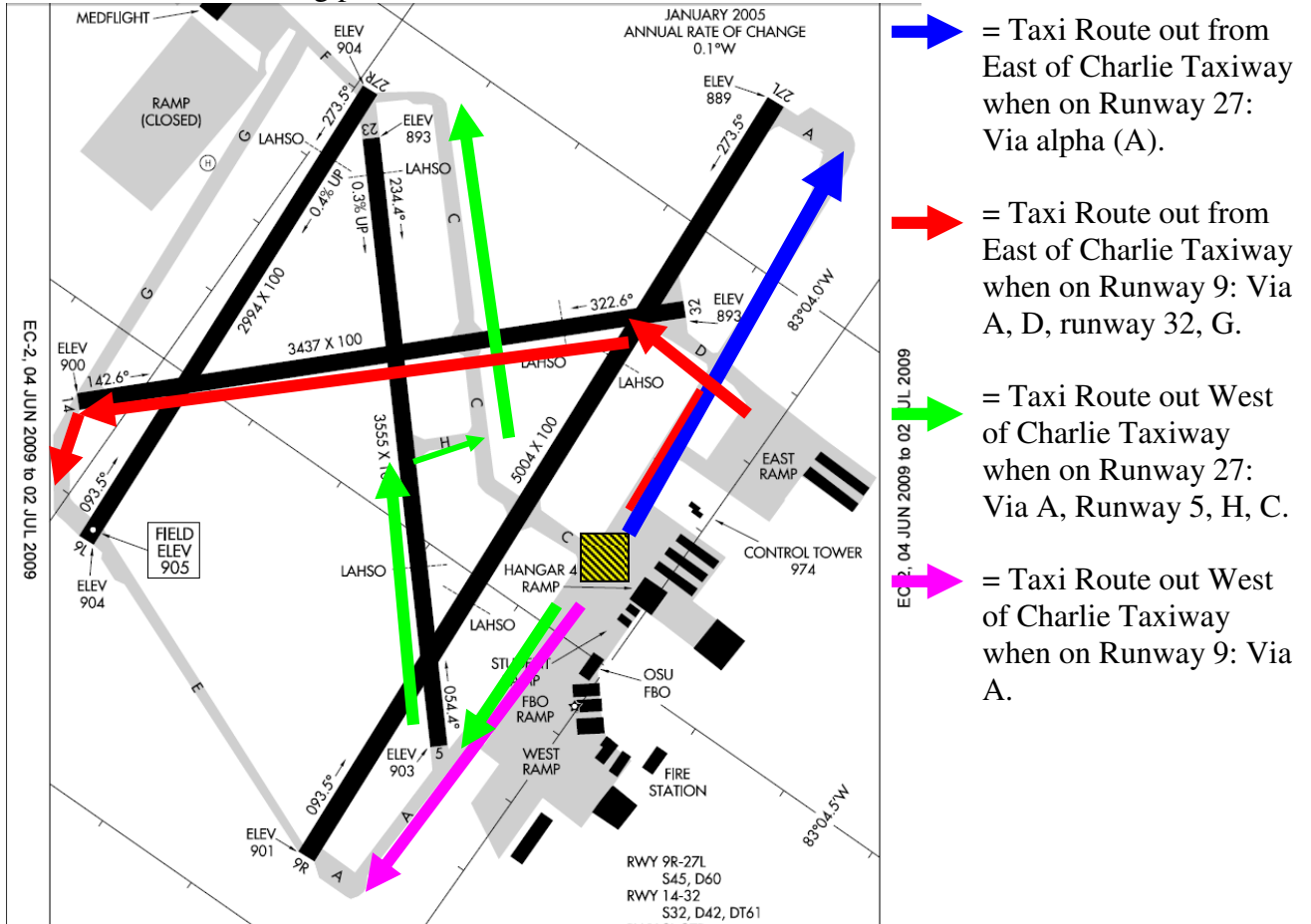


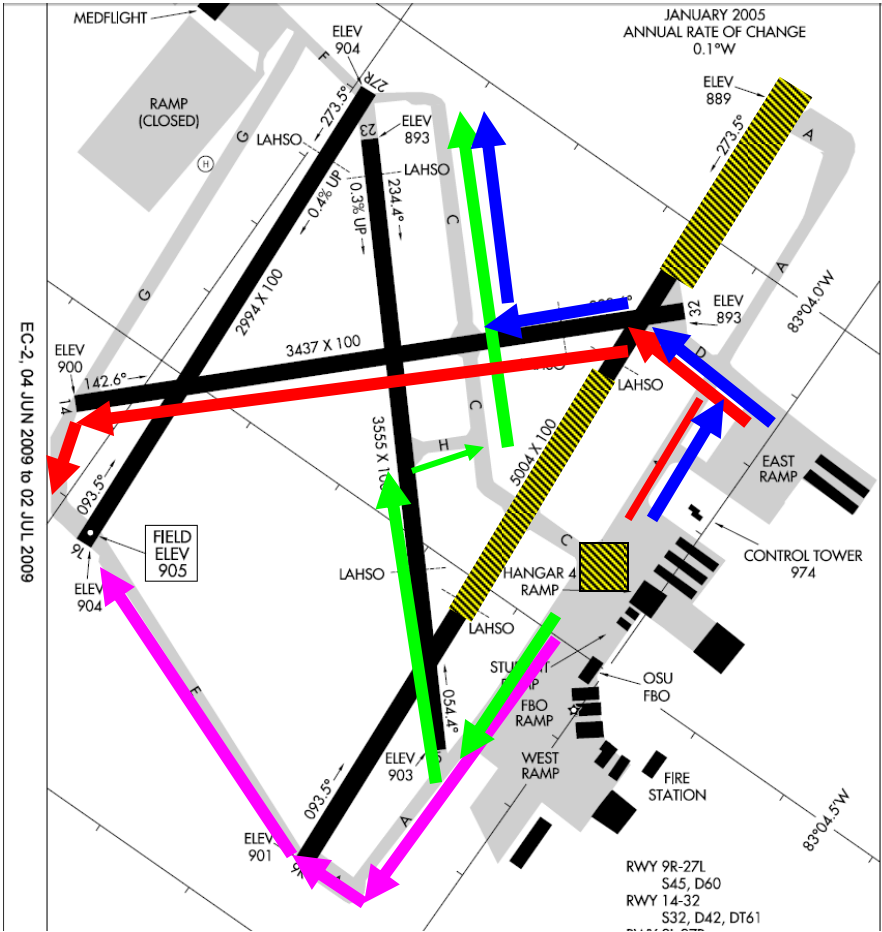
Taxi During airfield construction

The following general taxi routes are what can be expected during the various phases of construction during phases 0, 1A and 1B. They will be updated as each phase of construction approaches. These are general guidelines and may change without notice due to conditions! Always check with Flight Service for current NOTAMs prior to departure and check for the current ATIS information on 121.35. Be prepared to HOLD or experience some minor delays due to one-way traffic situations.

General Taxi Plan during phase ZERO: Taxi OUT



General Taxi Plan Phase 1A: TAXI OUT



Blue Arrow = Taxi Route out from East of Charlie Taxiway when on Runway 27: Via alpha (A), D, runway 32, C.

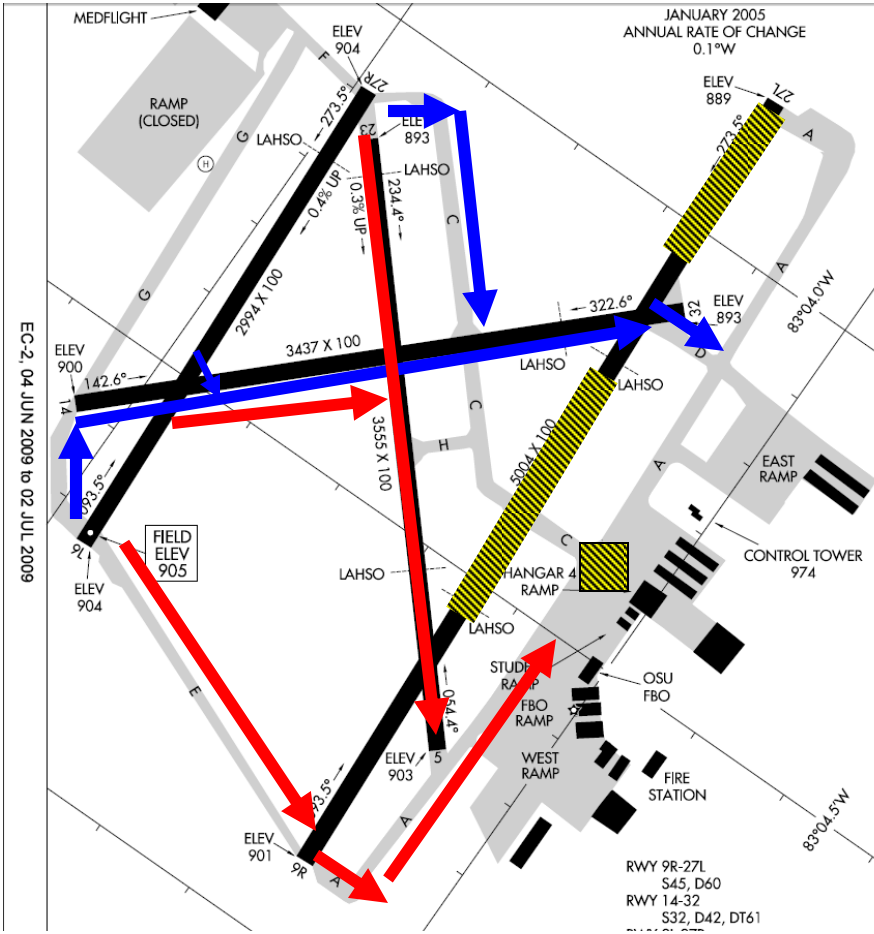
Red Arrow = Taxi Route out from East of Charlie Taxiway when on Runway 9: Via A, D, runway 32, G.

Green Arrow = Taxi Route out West of Charlie Taxiway when on Runway 27: Via A, Runway 5, H, C.

Magenta Arrow = Taxi Route out West of Charlie Taxiway when on Runway 9: Via A, E.

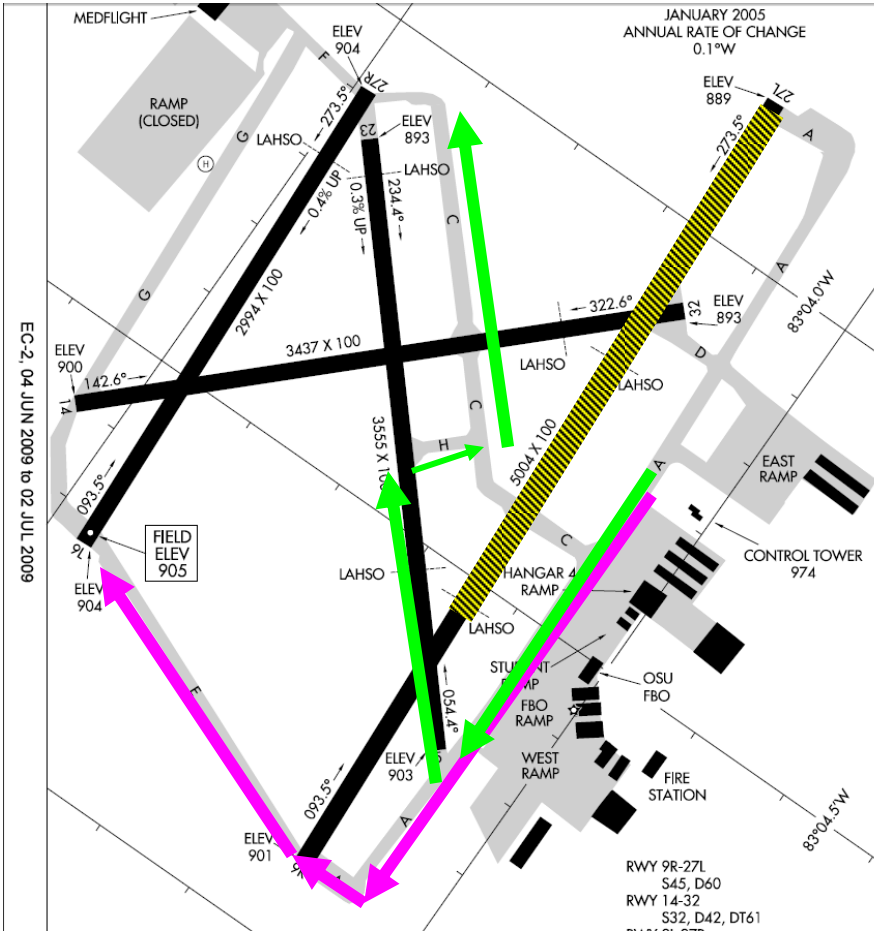
EC-2, 04 JUN 2009 to 02 JUL 2009

General Taxi Plan Phase 1A: TAXI IN



- ➔ = Taxi Route in to locations EAST of Charlie:
- ➔ = Taxi Route in to locations WEST of Charlie

General Taxi Plan Phase 1B: TAXI OUT



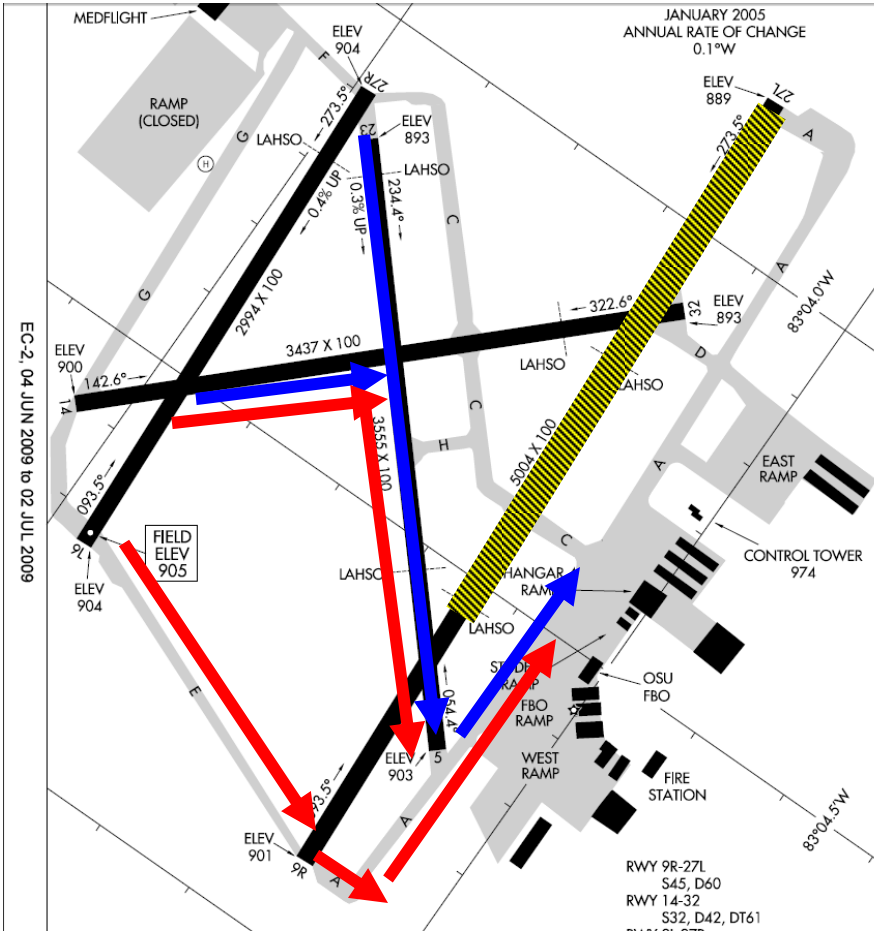
Blue Arrow = Taxi Route for ALL AIRCRAFT when on Runway 27: Via alpha (A), runway 5, H, C.

Pink Arrow = Taxi Route for ALL AIRCRAFT when on Runway 9: Via A, E.

EC-2, 04 JUN 2009 to 02 JUL 2009

RWY 9R-27L
S45, D60
RWY 14-32
S32, D42, DT61

General Taxi Plan Phase 1B: TAXI IN



- ➔ = Taxi Route in to all south ramp locations when landing runway 9:
- ➔ = Taxi Route in to south ramp locations when landing runway 27: