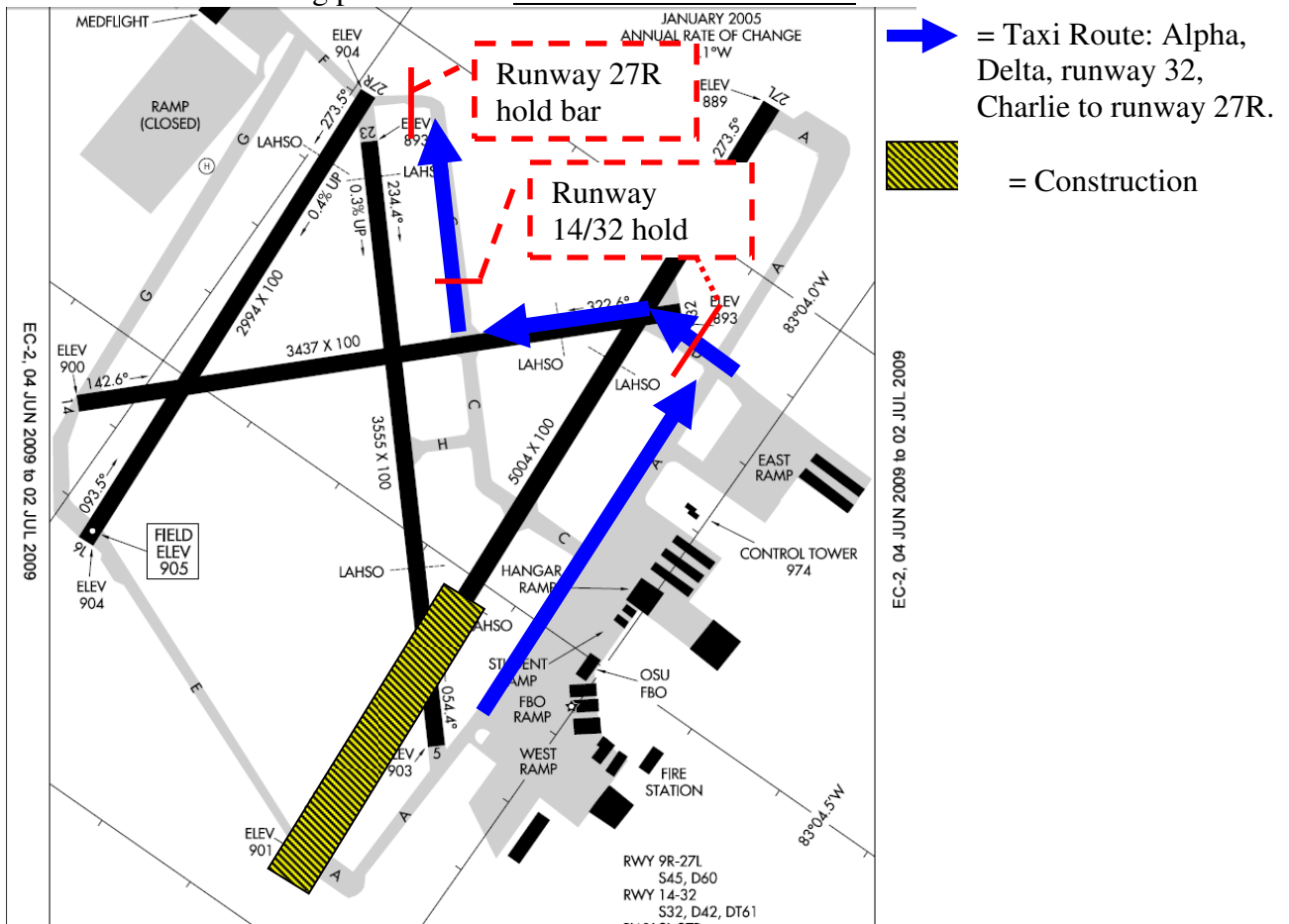


Taxi During airfield construction, Phase 2 construction.

The following general taxi routes can be expected during Construction phase 2. Future plans will be updated as each phase of construction approaches. These are general guidelines and may change without notice due to conditions! Always check with Flight Service for current NOTAMs prior to departure and check for the current ATIS information on 121.35. Be prepared to HOLD or experience some minor delays due to one-way traffic situations.

THESE ROUTES MAY ALSO CHANGE DUE TO UNIQUE, DAILY SITUATIONS.


General Taxi Plan during phase TWO: Taxi OUT RUNWAY 27R




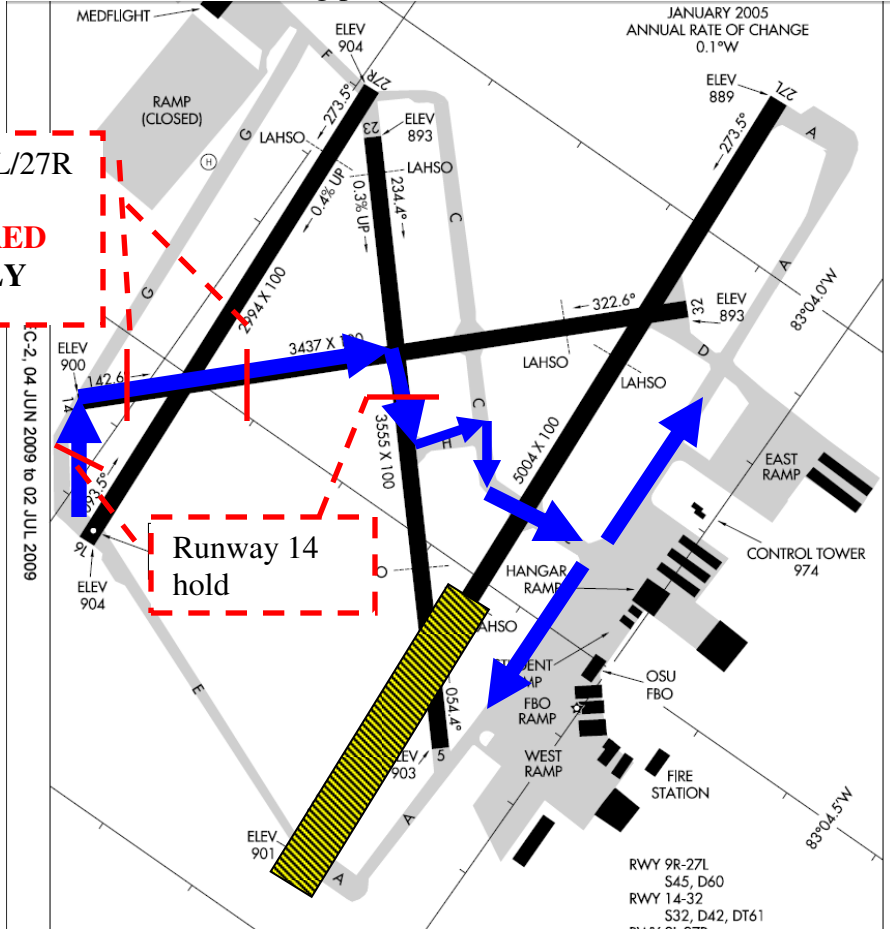
General Taxi Plan during phase TWO: Taxi FROM RUNWAY 27R

Runway 9L/27R
hold
Caution: **RED**
signs **ONLY**

Runway 14
hold

 = Taxi Route: Via Gulf
(or left turn on runway
14), runway 14, Runway
23, Hotel, Charlie,
Alpha to parking.

 = Construction



C-2, 04 JUN 2009 to 02 JUL 2009


EC-2, 04 JUN 2009 to 02 JUL 2009


RWY 9R-27L
S45, D60
RWY 14-32
S32, D42, DT61

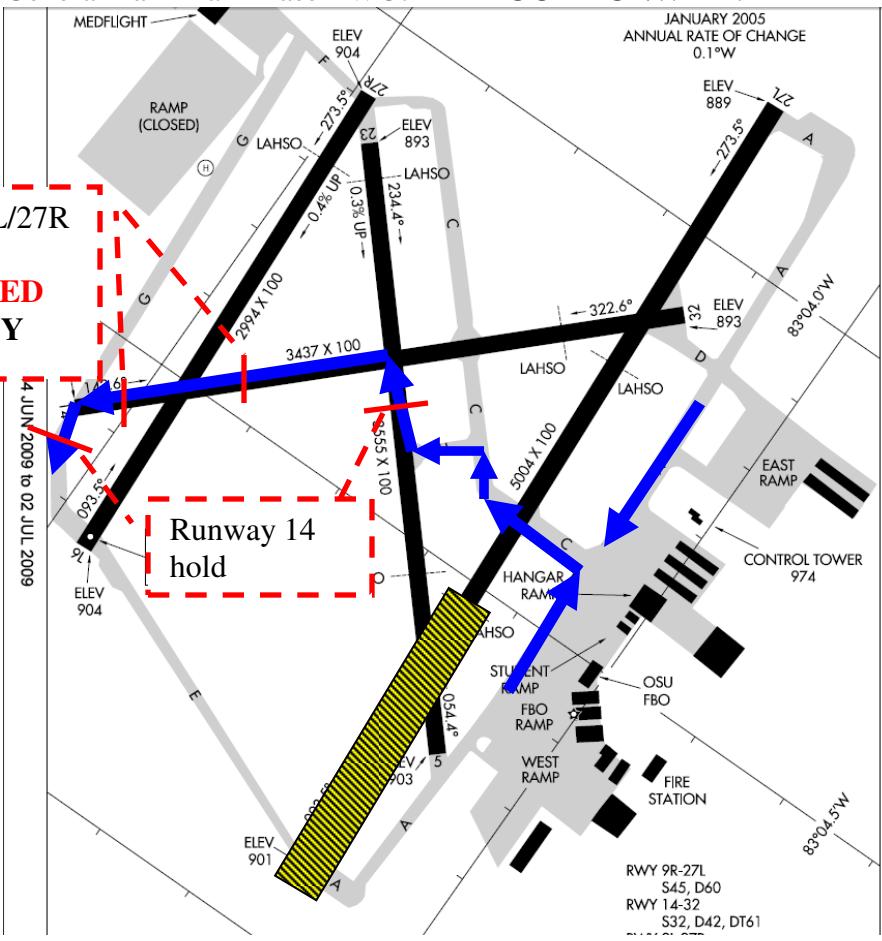
General Taxi Plan Phase TWO: TAXI OUT RUNWAY 9L

Runway 9L/27R
hold
Caution: **RED**
signs **ONLY**

Runway 14
hold

 = Taxi Route: Via Alpha, Charlie, Hotel, runway 5, runway 32, Gulf to runway 9L.

 = Construction



14 JUN 2009 to 02 JUL 2009

EC-2, 04 JUN 2009 to 02 JUL 2009

RWY 9R-27L
S45, D60
RWY 14-32
S32, D42, DT61

