

In accordance with Ohio Revised Code, Section 3335-105-07 "Airport Traffic Procedures," helicopter approach and departure corridors within The Ohio State University (OSU) class D/G airspace shall be in accordance with designated routes, as outlined herein, or as instructed by FAA ATCT. The purpose of these procedures are to minimize noise in the surrounding neighborhoods, and are applicable to all helicopter operations in or around the vicinity of OSU class D/G airspace on routine, non "Lifeguard" missions or flights.

Helicopters will be expected to maintain minimum altitudes in the vicinity of OSU when departing and arriving, performing maintenance test flights, and/or conducting training. Additionally, standard routes have been established for ease of transition and noise abatement (see attachments). These altitudes and routes are restricted to VFR use only (1000' ceiling and 3 miles visibility).

The control tower will normally assign the inbound route based on traffic and field conditions. Pilots may request deviation of these procedures through radio communication with the control tower. Any deviations from the route must be coordinated with the control tower prior to execution.

*Note: MedFlight/OmniFlight operations are subject to the Letter of Agreement between the Airport, Air Traffic Control, and MedFlight titled "NOISE ABATEMENT PROCEDURES FOR MEDFLIGHT AND OMNIFLIGHT HELICOPTERS," effective December 1, 2005.*

## 1. PROCEDURES.

*Note — "field boundary" is defined as Rt. 161 to the north, Ohio/ Chesapeake Railroad tracks to the east, West Case Road to the south and Sawmill Road to the west.*

a. When class 'D' airspace is in affect, the following procedures apply:

(1) Departing Helicopters: Request a standard route for departure. Example: **"OSU Tower, N4NZ, Main ramp, information 'Oscar' East departure."**

*Note: Obtain 1,500' MSL prior to field boundary.*

(2) Arriving Helicopters: Prior to entry into class D, contact the control tower. Example: **"OSU Tower, N4NZ, South of Airport, inbound main ramp, information 'Mike'."** Fly the route assigned by the control tower.

*Note: Do not descend below 1,700 MSL prior to field boundary.*

(3) Helicopters on 'Lifeguard' Missions: Request the most expeditious departure route. Should the established routes not afford the quickest departure, then request direct using headings in degrees. Example: **"OSU Tower, Lifeguard Medflight 1, North ramp, information 'Quebec', departure heading zero-six-zero."**

*Note: Mission profile permitting, establish minimum altitude of 1500' MSL prior to field boundary.*

(4) Maintenance Check Flights: Every effort will be made to stay within the field

boundary. Should a procedure require flight outside the field boundary, maintain a minimum 1700' MSL while operating outside the field boundary.

(5) Training/Check Flights: The trainee or pilot receiving the evaluation is responsible to brief the check airman on local noise abatement procedures.

(6) No Radio (NORDO): Should any established flight into the OSU class 'G' airspace become NORDO, the pilot should squawk code 7600 (or 7700 for emergencies, as appropriate) and proceed inbound via the following routes:

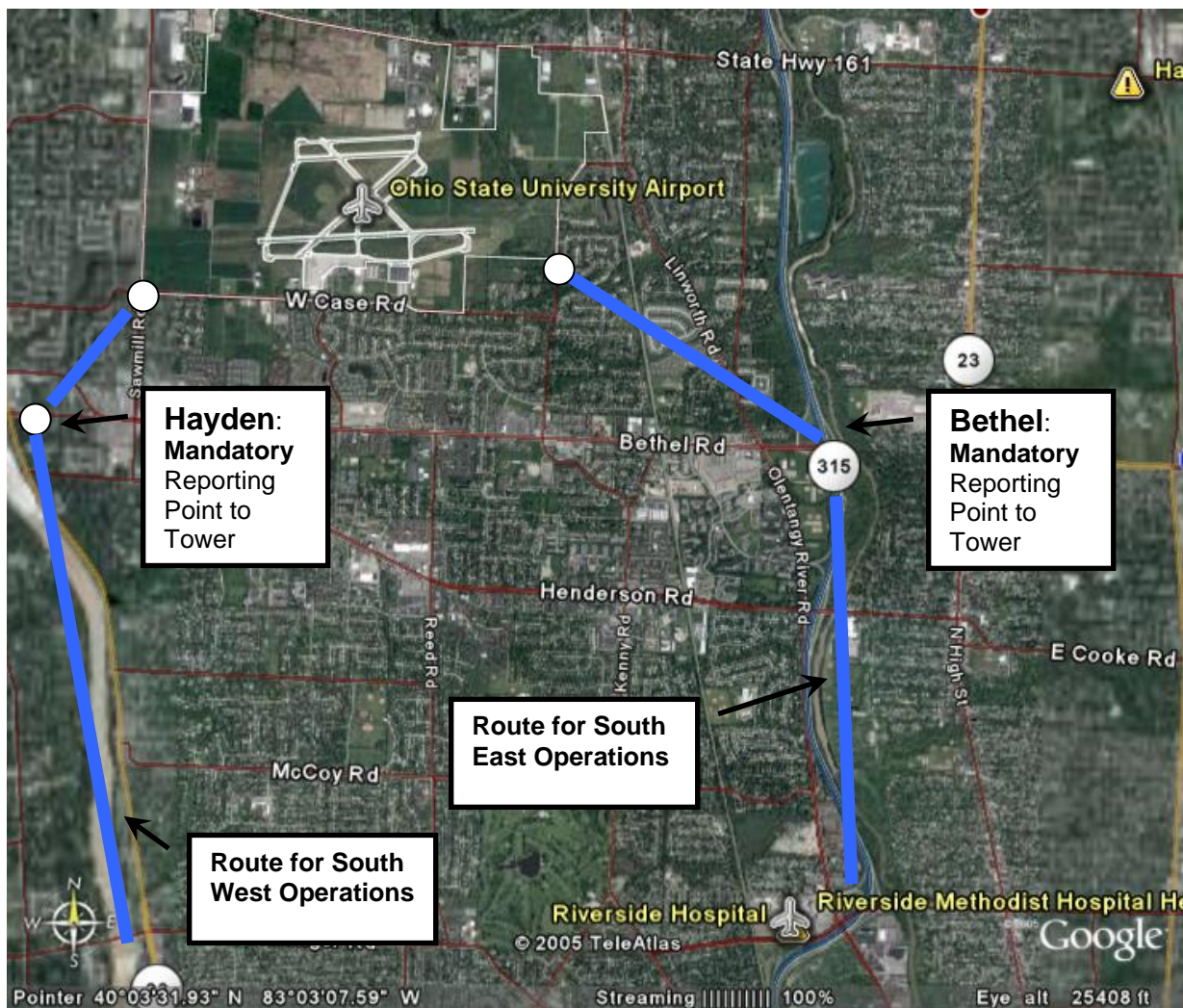
(a) SOUTH ROUTES: Proceed via South arrival and watch for light gun signals when abeam the control tower.

(b) NORTH ROUTES: Fly the assigned route and then watch the control tower for light gun signals after passing the State Route 161 descent point.

b. When class 'G' airspace is in affect, the altitude restrictions and standard routes still apply.

2. ATTACHMENTS: Diagram and description of Standard Routes.

Attachment 1: ARRIVAL/DEPARTURE ROUTES FROM/TO THE SOUTH

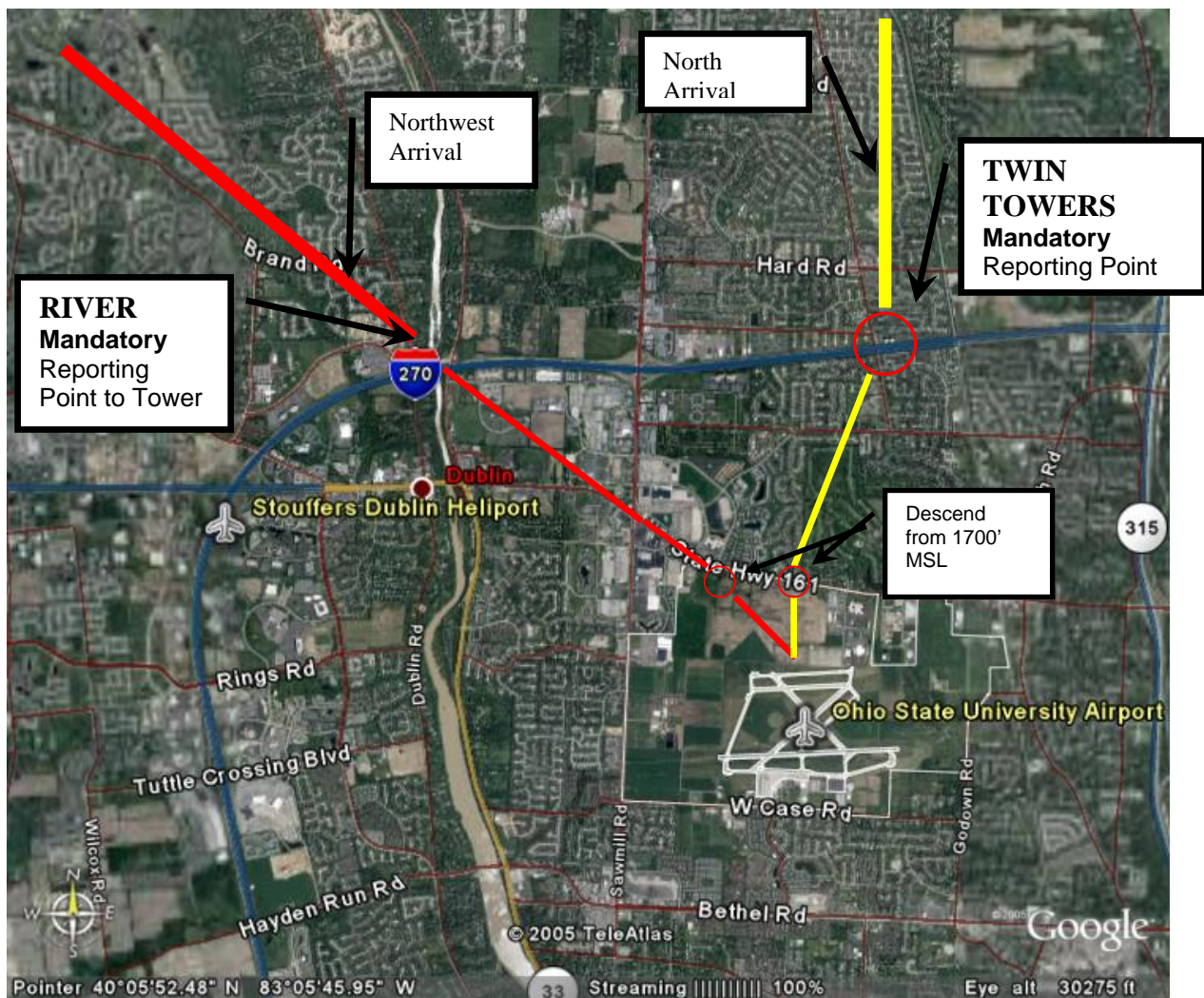


**SOUTHEAST ARRIVAL:** Proceed up State Route 315 and report to the Control tower when crossing Bethel Road. Unless instructed to hold at Bethel, proceed to the intersection of Godown Road and West Case Road. Descend from 1700' MSL. Follow ATC instructions

**SOUTHWEST ARRIVAL:** Proceed up the Scioto River and report to the Control tower when crossing Hayden Run bridge. Unless instructed to hold at Hayden Run, proceed to the intersection of Sawmill Road and West Case Road. Descend from 1700' MSL. Follow ATC instructions

**ALL DEPARTURES TO THE SOUTH:** Expedite climb to 1500' MSL and follow approach routes.

Attachment 2: ARRIVAL/DEPARTURE ROUTES FROM/TO THE NORTH



**NORTHWEST ARRIVAL:** Proceed direct to the intersection of Interstate 270 and the Scioto River, and report when crossing. Maintain 1700' MSL until field boundary. Follow ATC instructions.

**NORTH/NORTHEAST ARRIVAL:** Proceed direct to the twin towers north of the field along Interstate 270 and report crossing. Maintain 1700' MSL until field boundary. Follow ATC instructions.

**ALL DEPARTURES TO THE NORTH:** Expedite climb to 1500' MSL and follow approach routes.